



Undertone®

Under-mount Kitchen Sink
K-3099

Features

- 39-inch minimum base cabinet width.
- 18-gauge stainless steel.
- Under-mount.
- With SilentShield® sound-absorption technology.
- 9-1/2" (241 mm) deep left bowl and 5-1/2" (140 mm) deep right bowl.
- 34-3/4" (883 mm) x 18-1/2" (470 mm)

Optional Accessories

K-2996 Sink Rack
K-3292 Colander/Cutting Board
K-6139 Sponge Caddy
K-8801 Sink Strainer

Components

Product includes:
91915 Hardware Kit

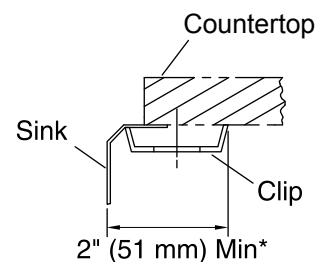
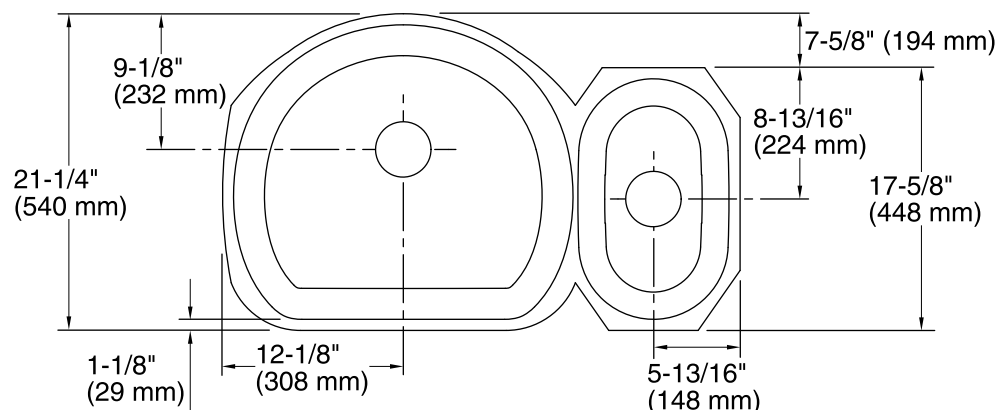


Codes/Standards

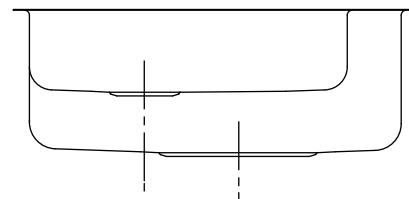
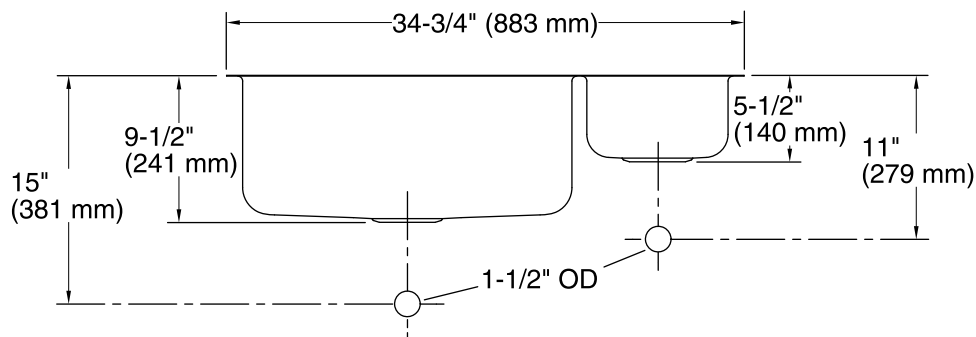
ASME A112.19.3/CSA B45.4

Lifetime Limited Warranty for KOHLER® Stainless Steel Sinks

See website for detailed warranty information.



* Allow clearance around sink rim for clip attachment.



Technical Information

All product dimensions are nominal.

Bowl configuration: High-low

Installation: Under-mount

Bowl area (Left) Length: 19" (483 mm)
Width: 22" (559 mm)
Bowl depth: 9-1/2" (241 mm)

Bowl area (Right) Length: 9" (229 mm)
Width: 15" (381 mm)
Bowl depth: 5-1/2" (140 mm)

Drain hole: 3-5/8" (92 mm)

Template: Under-mount, 1040323-7, required, included

Notes

Install this product according to the installation guide.

Allow a minimum of 2" (51 mm) clearance around the sink rim for clip attachment.