



Undertone Preserve

Under-mount Kitchen Sink
K-3325-HCF

Features

- 27-inch minimum base cabinet width.
- Single bowl.
- 9-1/2-inch depth provides generous workspace.
- No faucet holes.
- The innovative Preserve™ sink resists scratching and withstands everyday wear and tear.
- SilentShield® sound-absorption technology offers quieter performance.
- Rear drain increases workspace in the sink and storage space underneath.
- Includes a bottom sink rack.
- Includes installation hardware.

Material

- 18-gauge stainless steel.

Installation

- Under-mount

Components

Product includes:

K-6391 Stainless Steel Sink Rack



Codes/Standards

ASME A112.19.3/CSA B45.4

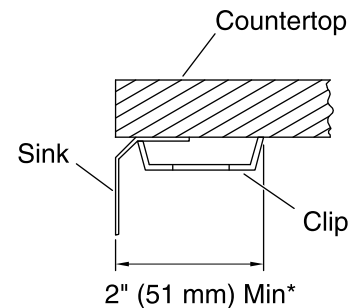
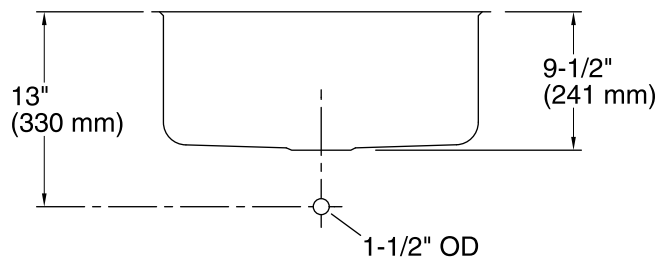
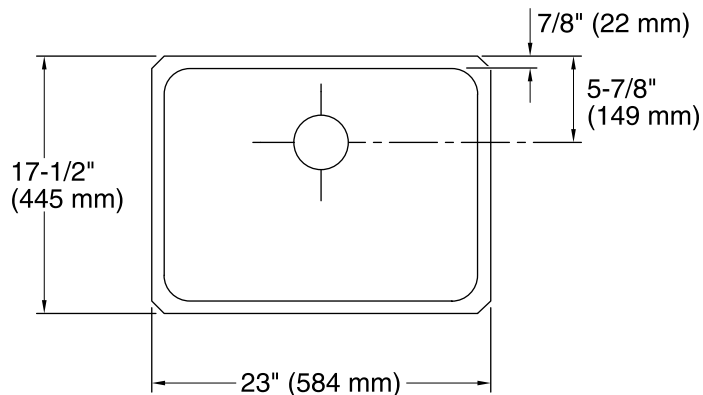
STERLING® Warranty - Stainless Steel Sinks

See website for detailed warranty information.

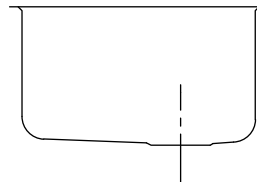


Undertone Preserve

Under-mount Kitchen Sink
K-3325-HCF



* Allow clearance around sink rim for clip attachment.



Technical Information

All product dimensions are nominal.

Bowl configuration: Single

Installation: Under-mount

Bowl area (Center) Length: 21-1/4" (540 mm)

Width: 15-3/4" (400 mm)

Bowl depth: 9-1/2" (241 mm)

Water depth: 9-1/2" (241 mm)

Drain hole: 3-3/4" (94 mm)

Template: Under-mount, 113193, required, included

Notes

Install this product according to the installation guide.