



**Vault™**

Under-mount Apron Front Kitchen Sink  
**K-3945**

**Features**

- 36-inch minimum base cabinet width.
- 18-gauge stainless steel.
- Under-mount.
- Large/medium bowls.
- Smart Divide® lowered divider.
- With integral shortened self-trimming apron.
- With SilentShield® sound-absorption technology.
- 35-1/2" (902 mm) x 21-1/4" (540 mm)

**Optional Accessories**

K-6434 Saddle Utility Rack  
K-6477 Sink Rack  
K-8801 Sink Strainer

**Components**

Product includes:

91915 Hardware Kit  
K-6476 Sink Rack

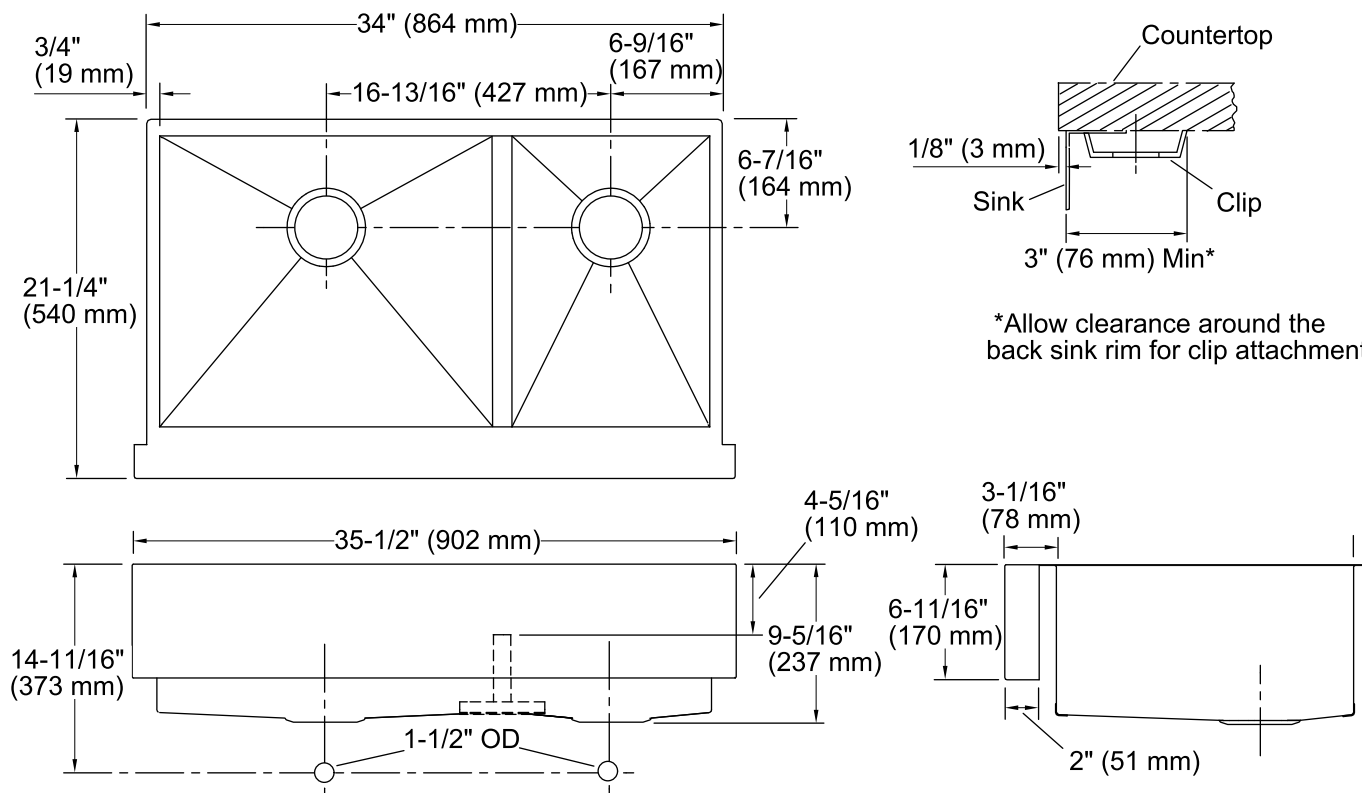


**Codes/Standards**

ASME A112.19.3/CSA B45.4

**Lifetime Limited Warranty for  
KOHLER® Stainless Steel Sinks**

See website for detailed warranty information.



### Technical Information

All product dimensions are nominal.

Bowl configuration: Offset

Installation: Under-mount

Min. base cabinet width: 36" (914 mm)

Bowl area (Left) Length: 19-11/16" (500 mm)  
Width: 17-3/16" (437 mm)  
Bowl depth: 9" (229 mm)

Bowl area (Right) Length: 11-11/16" (297 mm)  
Width: 17-3/16" (437 mm)  
Bowl depth: 9" (229 mm)

Drain hole: 3-11/16" (94 mm)

Template: Under-mount, 1166719-7, required, included

### Notes

Install this product according to the installation guide.

Allow a minimum of 3" (76 mm) clearance for the back 1" (25 mm) sink rim flange for clip attachment.

The 3/4" (19 mm) side rim flanges are supported without using the clip attachment. See the installation guide for further instructions.