



Dickinson®
Under-mount Kitchen Sink
K-6546-4U

Features

- KOHLER cast iron.
- Acid-resistant enamel finish.
- Single bowl.
- With integral apron.
- Under-mount (-4U)
- 4-hole (oversized) (-4U)
- 33" (838 mm) x 22-1/8" (562 mm)

Recommended Accessories

K-9000 P-Trap

Optional Accessories

K-5984 Cutting Board

K-6062 Sink Rack

K-8801 Sink Strainer



Codes/Standards









ASME A112.19.1/CSA B45.2

KOHLER® Enameled Cast Iron Kitchen Sink - Lifetime Limited Warranty

See website for detailed warranty information.

Available Color/Finishes

Color tiles intended for reference only.

| Color | Code | Description |
|--------------------------------------------------------------------------------------|------|---------------|
|  | 0 | White |
|  | FF | Sea Salt™ |
|  | 96 | Biscuit |
|  | 47 | Almond |
|  | FD | Cane Sugar™ |
|  | NY | Dune |
|  | 95 | Ice™ Grey |
|  | G9 | Sandbar |
|  | 33 | Mexican Sand™ |
|  | K4 | Cashmere |
|  | FT | Basalt |
|  | 58 | Thunder™ Grey |
|  | 20 | Suede |
|  | KA | Black 'n Tan |
|  | FP | Caviar |
|  | 7 | Black Black™ |

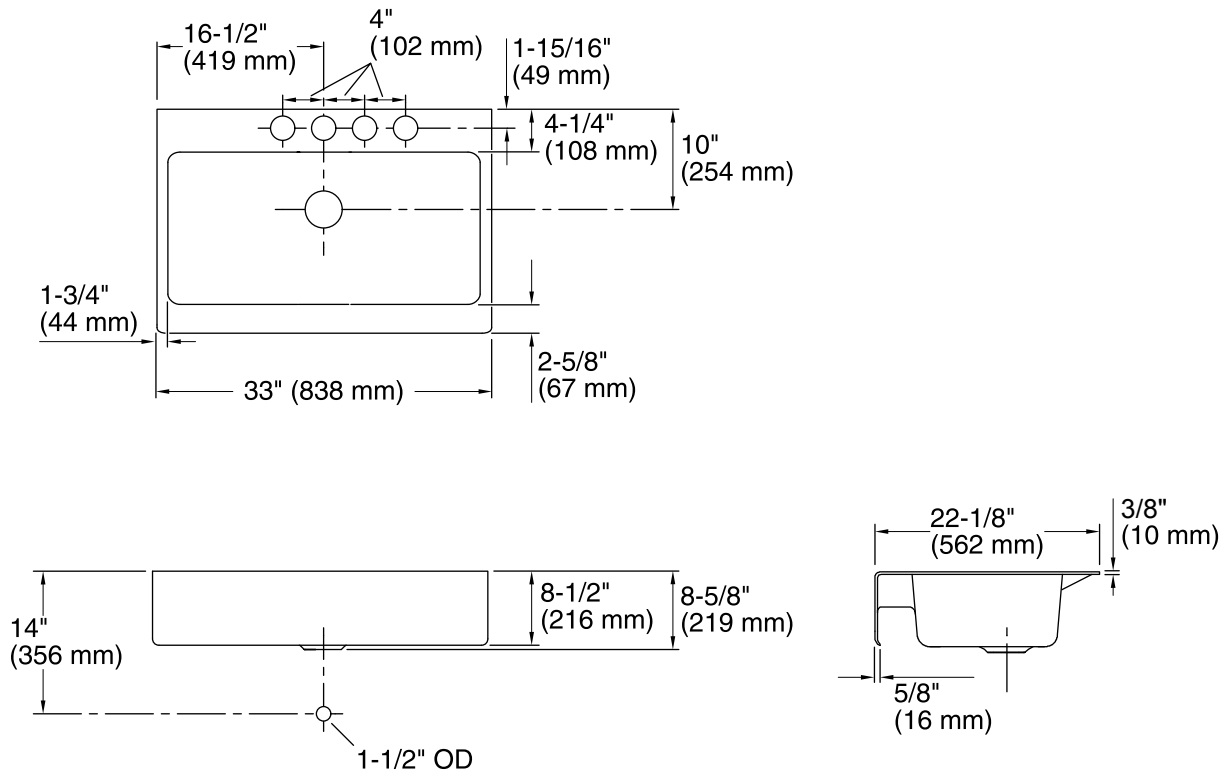
USA/Canada: 1-800-4KOHLER (1-800-456-4537)

Kohler Co. reserves the right to make revisions without notice to product specifications.

For the most current Specification Sheet, go to www.kohler.com.

7-21-2015 03:08

THE BOLD LOOK
OF **KOHLER®**



Technical Information

All product dimensions are nominal.

Bowl configuration: Single

Installation: Under-mount

Bowl area (Only) Length: 29-1/2" (749 mm)
Width: 15-1/4" (387 mm)
Bowl depth: 8-5/8" (220 mm)
Water depth: 8" (203 mm)

Number of deck holes: 4

Faucet hole(s): 2-3/8" (60 mm)

Notes

Install this product according to the installation guide.

Due to the special nature of this installation, Kohler Co. recommends that an experienced cabinet maker use the actual sink to build the new cabinet or modify an existing cabinet.

For under-mount installations, allow a 3/4" (19 mm) reveal to support the K-5984 cutting board.